



PARK REGULATIONS

In general, all rules and regulations established in Chapter 17 of the Code of the County of York, Public Areas Ordinance, shall apply. Some ordinances and rules of individual or group to abide by these rules and regulations may result in denial of use of the park.

Trash: Keep the park and surrounding waterways beautiful. Dispose of trash in designated receptacles. Report trash-related problems to park staff.

Dogs: Must be on leash at all times. Owners must clean up and dispose of waste. Report violations to park staff or call York County Dispatch at 757-890-3621.

Vehicles: Restricted to roadways and parking areas. Off-road driving is prohibited.

Fires: Shelter cooking grills must be attended at all times and fires completely extinguished.

Fishing: Virginia saltwater fishing license required.

Canoeing/Kayaking: Leave ID at the park office and report how long you expect to be gone. Canoeing and kayaking is at your own risk and permitted with U.S. Coast Guard approved personal flotation device (PFD). Know your strength, check tide, wind, and weather forecast.

Prohibited: Swimming, alcoholic beverages, golfing, horseback riding, motorized watercraft, flying radio or wire controlled airplanes, overnight camping, metal detectors.

PROGRAMS

- Special events: Calendar available in the park office. Call 757-890-3500 or 757-890-5840 to inquire or to add your e-mail address to the e-mailing list.
- Special events: Calendar available in the park office. Call 757-890-3500 or 757-890-5840 to inquire or to add your e-mail address to the e-mailing list.
- April to October, 9 a.m. to noon.
- BYOK (Bring your own kayak or canoe): Third Saturday of the month, Saturday of the month 7 to 9 a.m.
- Bird Walks: Second Saturday of the month, 8 to 10 a.m.; Fourth Saturday of the month, 10 a.m. to noon. Call for information about topic and leader.
- Walk and Talk: First Saturday of the month, 10 a.m. to noon. Call for information about topic and leader.

FEES

- Picnic shelter reservations: Shelter 1: 100-person capacity, \$50; Shelter 2: 40-person capacity, \$25; Shelter 3: 25-person capacity, \$25; Shelter 4: 20-person capacity, \$25.
- Disc golf \$3 per day or \$25 for annual pass.
- Special programs may require registration and fee; please inquire.

OFFICE

- Information, facility reservations, disc golf and canoe/kayak launch fee collection.
- Drinks and snacks for sale.
- Disc golf rentals and merchandise for sale.

FACILITIES

- Available first come, first served: Hiking & biking trails, playgrounds, picnic shelters, disc golf course, canoe & kayak launch, floating dock/fishing pier, basketball & volleyball courts, softball field, horseshoe pits.
- Picnic shelters may be reserved (see fees).
- Public restrooms.

TELEPHONE

- New Quarter Park office: 757-890-5840
- New Quarter Park cell: 757-812-5589
- York County Parks & Recreation: 757-890-3500
- York County Dispatch: 757-890-3621 (non-emergency)

DIRECTIONS

From I-64: Exit 242A at Rt. 199 to Jamestown. Exit Rt. 199 at Rt. 143. Turn right. Follow Rt. 143 to Pennington Rd. Turn right. Travel 1 block. Turn left on Hubbard Lane. Follow Hubbard for about one mile. After Colonial Parkway overpass, turn right on Lakeshead and follow to park.

From Colonial Parkway: Exit at Queens Lake. Turn right. Turn onto Lakeshead and follow the sign to New Quarter Park.

HOURS

May Through October: Open daily from 8 a.m. until dusk

November Through April: Friday 10 a.m. to dusk

Saturday and Sunday 8 a.m. to dusk

History

Archaeologists have discovered prehistoric sites that reveal this land was home to Woodland Indians. After 1607, explorers from Jamestown crossed through the area to visit Chief Powhatan at Werowocomoco (Gloucester). The land along Queens Creek and the York River was granted to English settlers beginning in the 1630s.

In the early 1700s, Robert "King" Carter named this tract New Quarter, one of many quarters or farms that made up his landholding. He gave it to his grandson, Carter Burwell, who built Carter's Grove. Slaves lived and toiled here for about 150 years. Nathaniel Burwell, Carter Burwell's son, and many of his slaves moved west after the American Revolution.

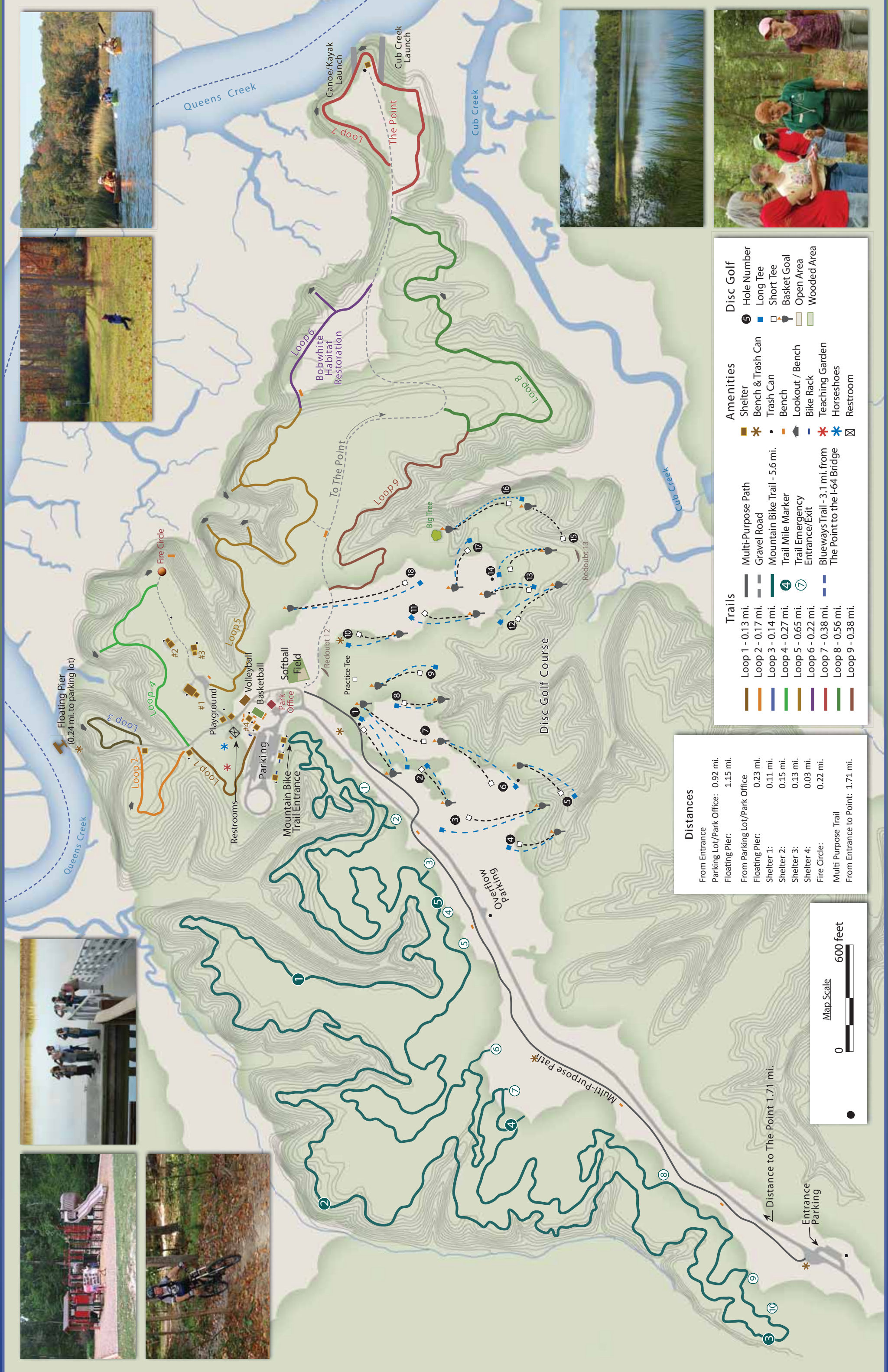
During the Civil War, Union Troops at Fort Monroe launched a campaign to take Richmond, the Confederate Capital. Earthworks were built to slow the advance; Redoubts 12 and 13 are within the Park.

After the Civil War, the forest grew while the land was lightly used by tenant farmers. York County acquired the property at no cost through the federal surplus land act program in 1976 on the condition that it be used for recreational purposes. Today the park is enjoyed by thousands of outdoor and recreational enthusiasts.

Welcome to New Quarter Park

The mature forest, ridges, bottoms, and wetlands of this 54-acre York County park are alive with a wide variety of woody and herbaceous plants that provide habitat for deer, raccoons, birds, turtles, snakes, millipedes, and more. The Virginia Department of Game and Inland Fisheries' Birding and Wildlife Trail program has recognized New Quarter Park as one of coastal Virginia's best sites for wildlife-watching and hiking.





Distances

From Entrance	0.92 mi.
Parking Lot/Park Office	1.15 mi.
Floating Pier:	
From Parking Lot/Park Office	0.23 mi.
Shelter 1:	0.11 mi.
Shelter 2:	0.15 mi.
Shelter 3:	0.13 mi.
Shelter 4:	0.03 mi.
Fire Circle:	0.22 mi.
Multi Purpose Trail	
From Entrance to Point:	1.71 mi.

Trails

Loop 1 - 0.13 mi.	Multi-Purpose Path
Loop 2 - 0.17 mi.	Gravel Road
Loop 3 - 0.14 mi.	Mountain Bike Trail - 5.6 mi.
Loop 4 - 0.27 mi.	Trail Mile Marker
Loop 5 - 0.65 mi.	Trail Emergency Entrance/Exit
Loop 6 - 0.22 mi.	Blueways Trail - 3.1 mi. from The Point to the I-64 Bridge
Loop 7 - 0.38 mi.	
Loop 8 - 0.56 mi.	
Loop 9 - 0.38 mi.	

Amenities

Shelter	Shelter & Trash Can
Bench & Trash Can	Trash Can
Trash Can	Bench
Bench	Lookout / Bench
Lookout / Bench	Bike Rack
Bike Rack	Teaching Garden
Teaching Garden	Horseshoes
Horseshoes	Restroom

Disc Golf

Hole Number	5
Long Tee	□
Short Tee	□
Basket Goal	○
Open Area	□
Wooded Area	□

